



Better Care Together  
Thurrock

# Thurrock IMC update

Health and Wellbeing Board

3<sup>rd</sup> March 2022

# Corringham IMC



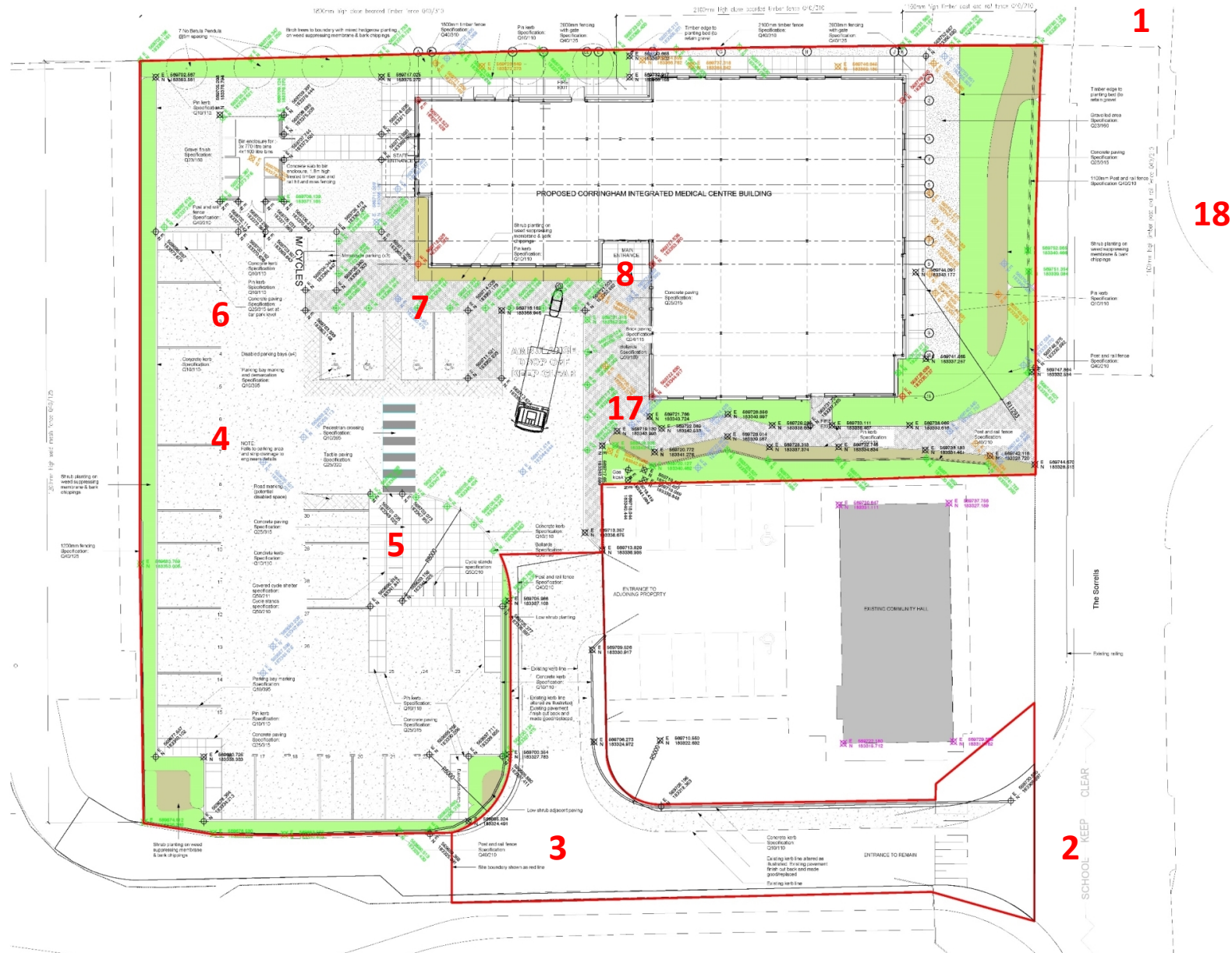
Better Care Together  
Thurrock

# Corringham Integrated Medical Centre

- Two story centre providing 1,220m<sup>2</sup> of purpose-built, new facilities
- Shared multi purpose building, with both clinical and non-clinical spaces
- All rooms have been designed for multi-use and can be bookable e.g. therapy, exam consult and treatment rooms
- Three large group rooms with retractable walls for use
- Two GP practices and designated phlebotomy room– current public engagement process
- Range of meeting rooms for staff/stakeholders, sizes and spaces on the first floor
- Staff areas, break out areas, space for MDTs and a large hot desking and agile working space
- Hook up facilities for mobile screening units

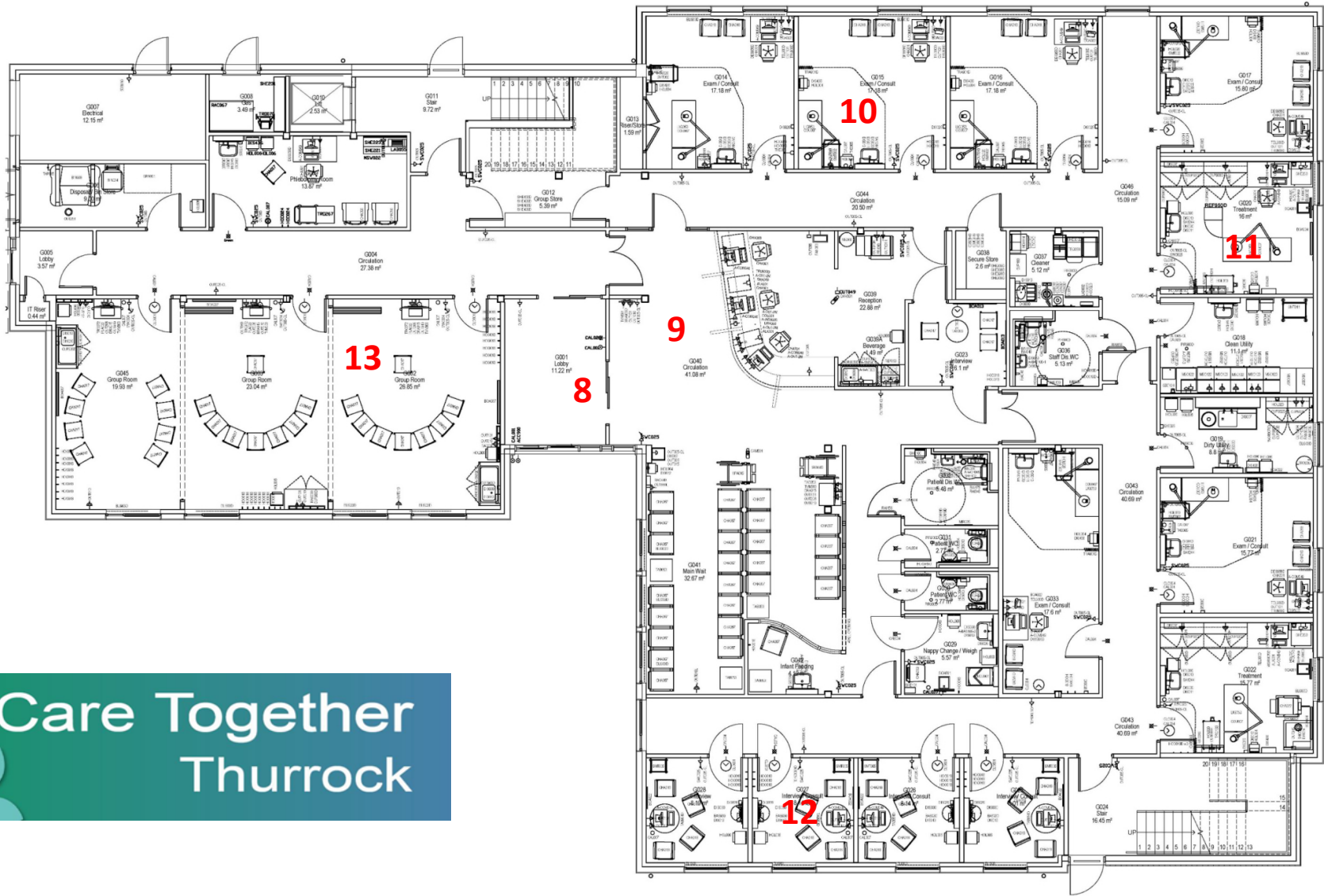


Better Care Together  
Thurrock



Site Plan

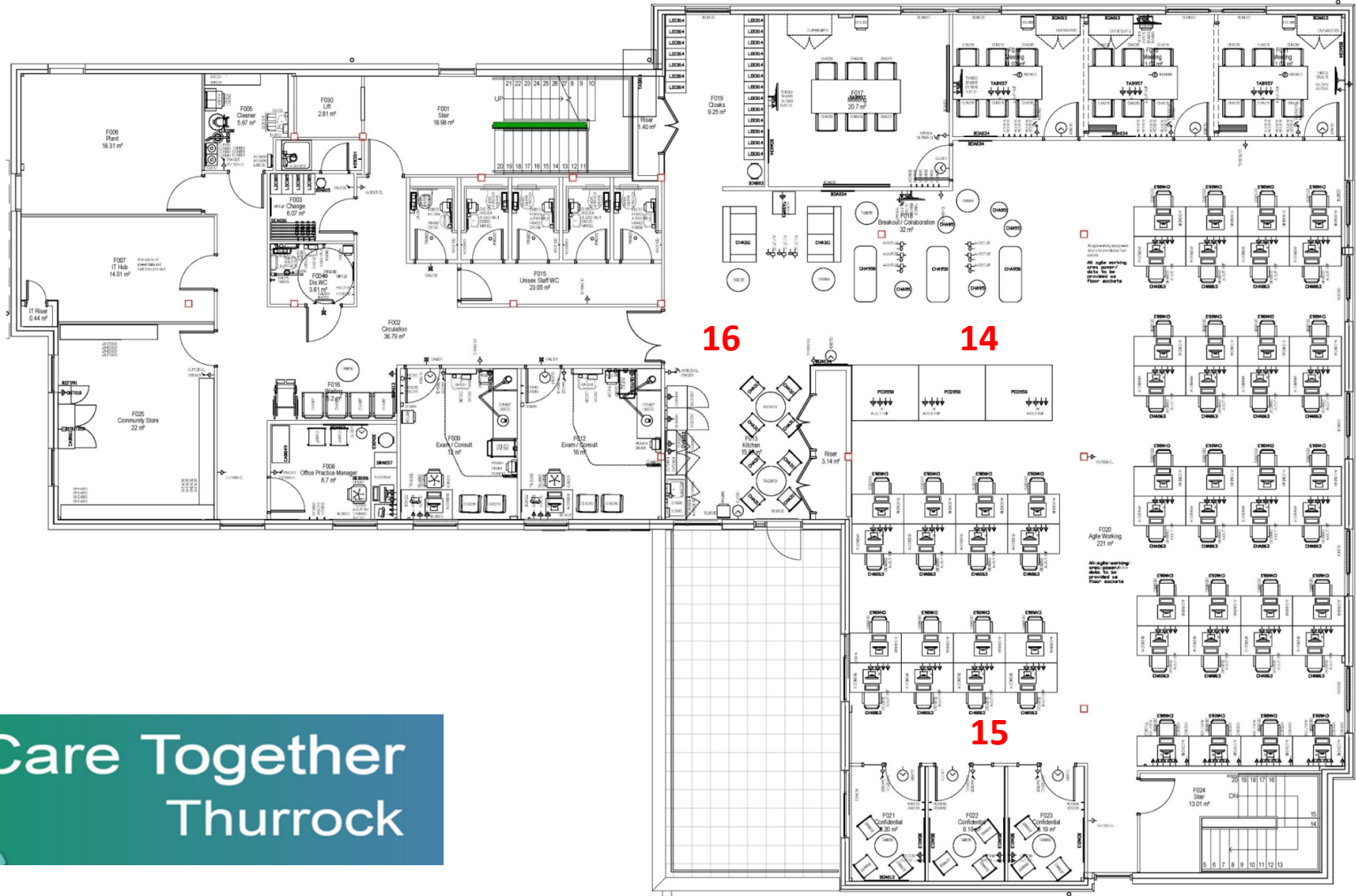




Ground Floor Plan



First Floor Plan





**Partnership site visits: 2021**







**Corringham IMC – external images**







**Corringham IMC – internal images**



# Corringham IMC - time line to completion

**December 2021** – Agreement for reception function and a building manager role. Meetings with all leads to determine which services will be delivered.

**November 2021** – identified collaborative/partner led subgroups key decision and input/lead the plan...

**Subgroups identified:** ICT, Comms and engagement, finance, Operations (reception and functions and SOP), Estates/design, HR and workforce

**October 2021** - Start to develop a mobilisation plan for CIMC to be operational by Spring 2022

**January 2022** – CIMC specialise in diabetes/CVD pathways. Utilisation/service plan is agreed. SOP. Furniture & equipment ordered  
**Notified of delay to the opening** – due to IT line: BT unable to confirm a date for installation

**February 2022** – Finance discussions. Hotdesking workshop Lease arrangements workshop. Review Travel Plan: parking principles/parking eye. Continue to develop SOP. Final amendments to build to be completed

**March 2022** – Handover building to NELFT  
Planned Workshops

- CVS and Third sector
- Reception model

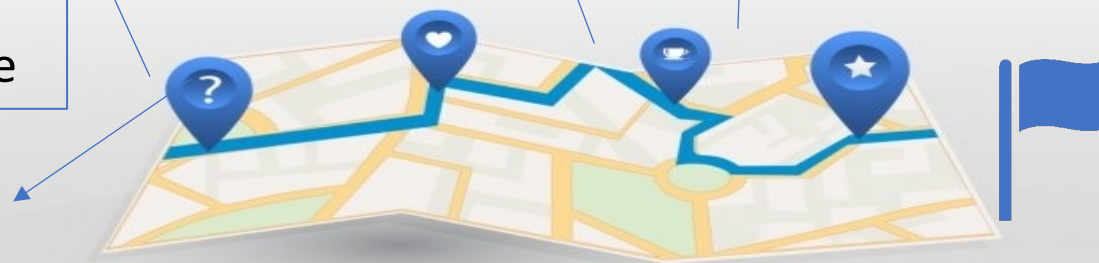
Planned visits for all

- 14<sup>th</sup> March (10am, 11,30am or 1pm)

Staff consultation launch (TBC)

- Service transition plans developed

**CIMC to be operational: April/July 2022**





# Thurrock Integrated Medical Centres: Service Model

The overarching model of care for the four IMCs incorporates the following key principles/themes:

Single locality model	Holistic offer for the whole system	Care navigation
Enabling self-care	Getting it right first time	Direct access to required services
Purpose-built 'one-stop shop' approach	Faster access to diagnostics	Reduced referrals to secondary care services
Reduced waiting times	Holistic and personalised care	IMCs acting as an enabler to transform service

These key themes are reflected in the overarching service model for Corringham IMC, which is illustrated below.

- **Long-Term Conditions**
  - Diabetes/CVD
- **Outpatients**
  - Pelvic therapies
  - Community midwifery
- **Diagnostics**
  - Phlebotomy
  - Ultrasound
  - AAA Screening
- **Adult Mental Health Services**
- **Adult Community Health Services**
- **Sexual Health Services**
- **Primary Care**
- **Adult Social Care**
- **Children and Young people services**
- **Lifestyle & Wellbeing Services**



<b>NELFT</b>	<b>Services to be delivered in CIMC</b>	<b>Partners</b>	<b>Services to be delivered in CIMC</b>
<b>Community Heart Failure Service</b>	<b>Respiratory Service COPD Team</b>	<b>Thurrock Enhanced Mental Health Primary Care Service</b> <b>EPUT</b>	<b>PCN Obesity Personalised Care Model</b> <b>Primary Care Network</b>
<b>Pulmonary Rehab Team, part of Integrated Respiratory Long-term Conditions</b>	<b>Adult Diabetes assessment and management</b>	<b>Adult Social Care Team – Community Led Support</b>	<b>Inclusion Thurrock IAPT</b>
<b>Older Adults Health and Wellbeing Service</b>	<b>Tissue Viability Service</b>	<b>Thurrock MIND</b>	<b>Vision Substance Misuse Service - Inclusion Thurrock</b>
<b>Thurrock ICT Service</b>	<b>UCRT Service</b>	<b>MSE NHS FT - AAA Screening</b>	<b>MSE NHS FT - Phlebotomy</b>
<b>Dementia Crisis Support Service</b>		<b>MSE NHS FT - Community midwifery</b>	<b>MSE NHS FT - Pelvic therapies</b>
<b><u>NELFT Children Services:</u></b>	<b>EWMHS presence</b>	<b>Local Community/Support groups</b>	<b>CVS and Third sector presence</b>
<b>Children’s Speech and Language Therapy</b>	<b>0-19 Healthy Families Service</b>		



# Purfleet on Thames IMC

Better Care Together  
Thurrock

- *SFLG have supported the Outline Business Case (OBC) on the basis of revised plans and affordability.*
- *The OBC will now progress through the sign off process of each partner organisation.*
- *The OBC sets out plans for a building of 1,814m<sup>2</sup> (GIA). It contains space for GP, PCN, out of hospital, community, mental health, council run and voluntary services. This space is also designed to enable use by the community to support health and wellbeing initiatives.*
- *The target opening date on the Purfleet IMC is 2024/25*
- *The aim is to submit the OBC to NHSE/I by the 31<sup>st</sup> March 2022, for support and to enable the project to progress to the final stage of approval - Full Business Case.*

# Purfleet on Thames IMC



Proposed floor plans:

Ground Floor



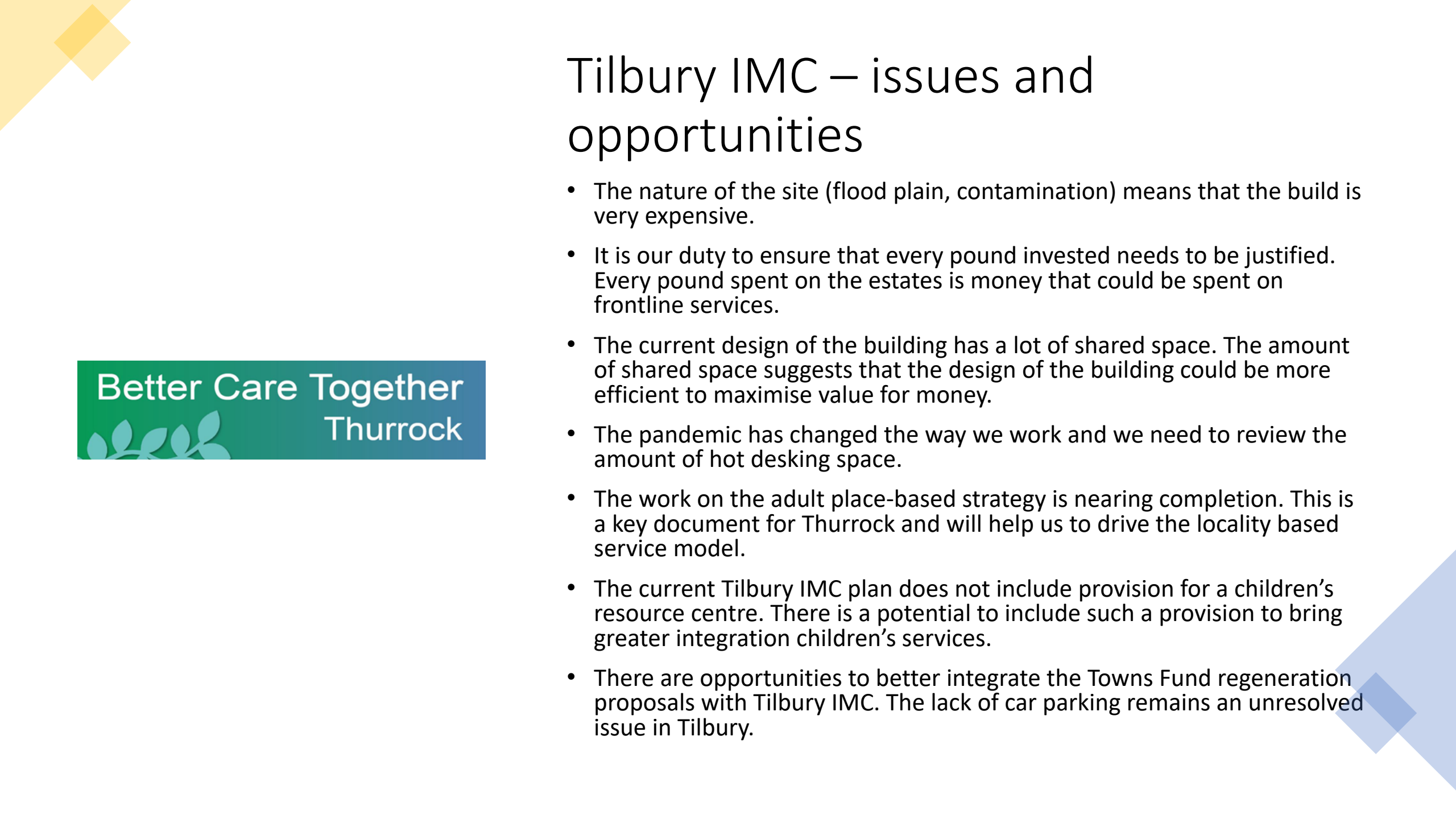
First Floor



# Tilbury IMC – issues and opportunities

- The nature of the site (flood plain, contamination) means that the build is very expensive.
- It is our duty to ensure that every pound invested needs to be justified. Every pound spent on the estates is money that could be spent on frontline services.
- The current design of the building has a lot of shared space. The amount of shared space suggests that the design of the building could be more efficient to maximise value for money.
- The pandemic has changed the way we work and we need to review the amount of hot desking space.
- The work on the adult place-based strategy is nearing completion. This is a key document for Thurrock and will help us to drive the locality based service model.
- The current Tilbury IMC plan does not include provision for a children's resource centre. There is a potential to include such a provision to bring greater integration children's services.
- There are opportunities to better integrate the Towns Fund regeneration proposals with Tilbury IMC. The lack of car parking remains an unresolved issue in Tilbury.

Better Care Together  
Thurrock



# IMC Tilbury

—

## conclusions and next steps


- NHS remains fully committed to building the Tilbury IMC and closure of Orsett hospital by 2025. The NHS is finalising plans to fund design costs and meeting the net zero carbon.
- The building will need some redesign work to address the issues and opportunities outlined on the previous slide.
- The issue of car parking at Tilbury will need to be resolved before a planning application will be approved, although this will not be required to be resolved until before FBC stage.
- Tilbury IMC project board to develop a plan to undertake the redesign work. This will include costs and timelines.
- The project team will be enhanced by senior programme management support.





# Grays IMC

Better Care Together  
Thurrock




- The new Grays IMC will be based at the Thurrock Community Hospital (TCH) site
- NELFT and EPUT clinical services are already on site, some of which will split across the 4 IMCs once created. There is also EPUT corporate teams.
- Archus, a healthcare planning consultant, was appointed to review the use of existing space at TCH and this work is now complete.
- The review confirms there is adequate space and potential site layouts for those services that will need to move onto site to create the IMC. These include primary care services and Orsett service re-locations.
- A modular build approach is recommended with interconnecting buildings to ensure integrated services.
- The report highlights an opportunity to utilise existing admin space to a greater extent to reduce the need for additional admin space requirements on site.
- Work is now underway to confirm the exact space needed for these services to develop an overall site masterplan and cost of development. Expected by May 2022.

# Primary care presence at Grays IMC

As part of ascertaining the future space requirements on site, an options appraisal is being undertaken by Archus with stake holders for primary care presence within IMC. The review will:

Better Care Together  
Thurrock



- Assess the future space requirement for primary care and PCN services.
- Produce a list of site options and appraise them on NHSE/I options assessment framework
- Production of high level Schedule of Accommodation for the shortlisted options.
- Produce construction cost estimates for the shortlisted options
- Proposed next steps and report recommendations
- Timeframe - 31<sup>st</sup> March 2022

# Community Diagnostic Centres

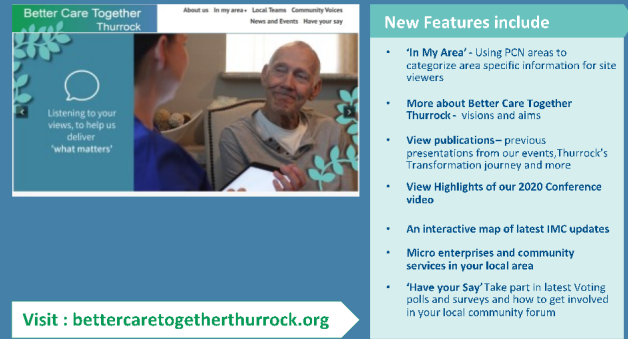
Better Care Together  
Thurrock



- Community Diagnostic Centres are a nationally funded programme to increase diagnostic capacity. New one-stop-shops for checks, tests and scans in the heart of local communities will make services more accessible and convenient for patients
- MSE System partners are working collaboratively to decide the best locations for the centres
- This is new capacity with a focus on elective patients to support rapid access to tests and also help improve outcomes for patients with cancer and other serious conditions
- A national process is being established for systems to put their investment proposals forward. A time scale of three years for completion has been allocated with £2.3billion capital money nationally to build the centres
- An MSE system Board is being set up as part of the ICS governance arrangements to oversee programme. This will provide routine updates to HOSCS and Wellbeing Boards and proposals will ensure alignment to the Thurrock Integrated Medical Centre programme.

# Questions & Answers

## Introducing our new Better Care Together Thurrock Website



The screenshot shows the website header with navigation links: 'About us', 'In my area', 'Local Teams', 'Community Voice', 'News and Events', and 'Have your say'. Below the header is a banner image with the text 'Listening to your views to help us deliver 'what matters''. To the right, a 'New Features include' section lists several updates.

- **'In My Area'** - Using PCN areas to categorize area specific information for site viewers
- **More about Better Care Together Thurrock** - visions and aims
- **View publications** - previous presentations from our events, Thurrock's Transformation journey and more
- **View Highlights of our 2020 Conference video**
- **An interactive map of latest IMC updates**
- **Micro enterprises and community services in your local area**
- **'Have your Say'** Take part in latest Voting polls and surveys and how to get involved in your local community forum

**Visit : [bettercaretogetherthurrock.org](https://bettercaretogetherthurrock.org)**

Tell us your thoughts about our new website on our 'Have your say' page

